

Batch Convert Drawings Training(Convert)

Batch Convert Drawings_Training(Convert).zip



Batch Convert Drawings - Overview

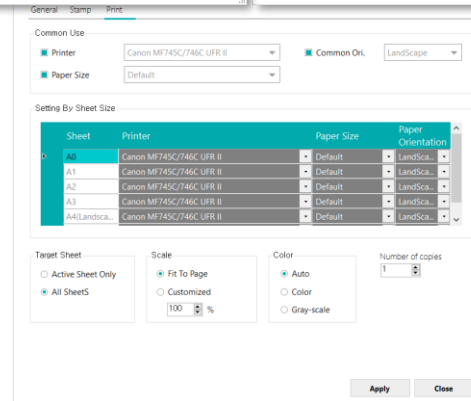
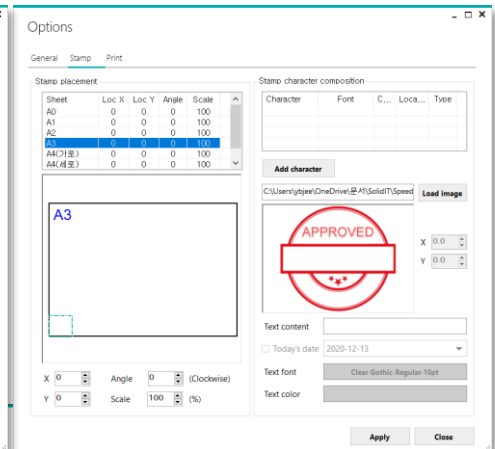
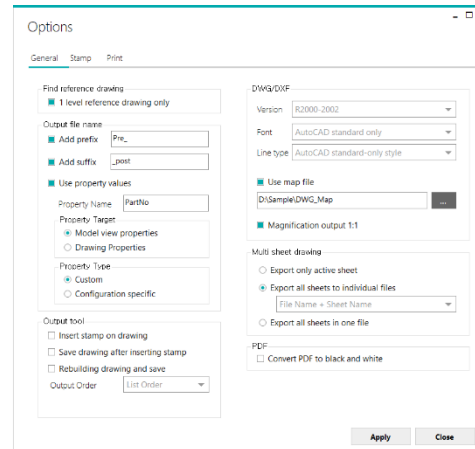
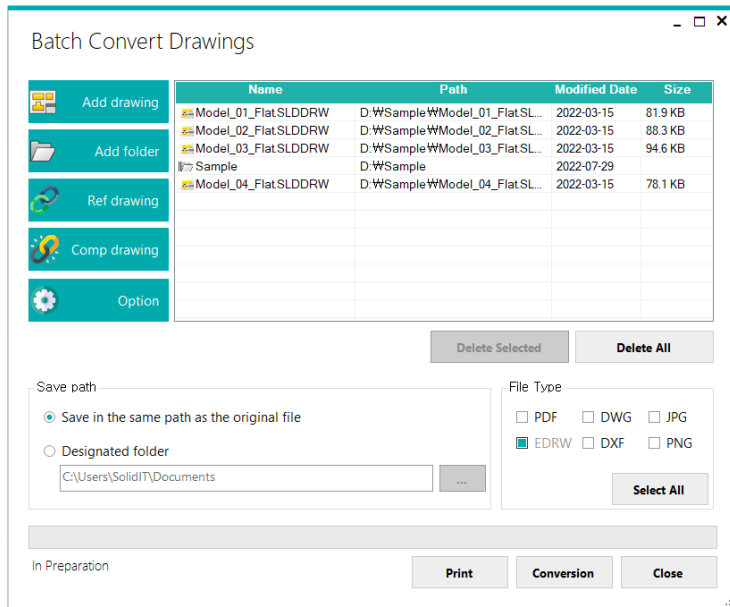
Main Functions

- Convert the format of drawings file at the same time
- Set printer and paper options based on sheet size
- Users can edit arrange, scale, angle and etc .

Benefits

- By stamp function, fast release drawings without redundant process
- Reduce the repeated work related to printing drawings
- Reduce the time with the function to find referenced drawings

Course Objective: Follow instructions through the course and learn how to use Batch Convert Drawings.

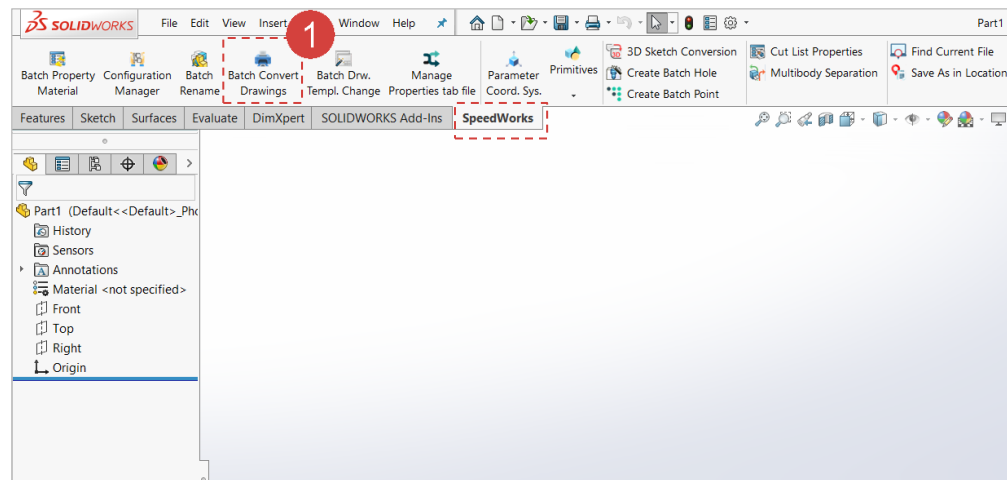
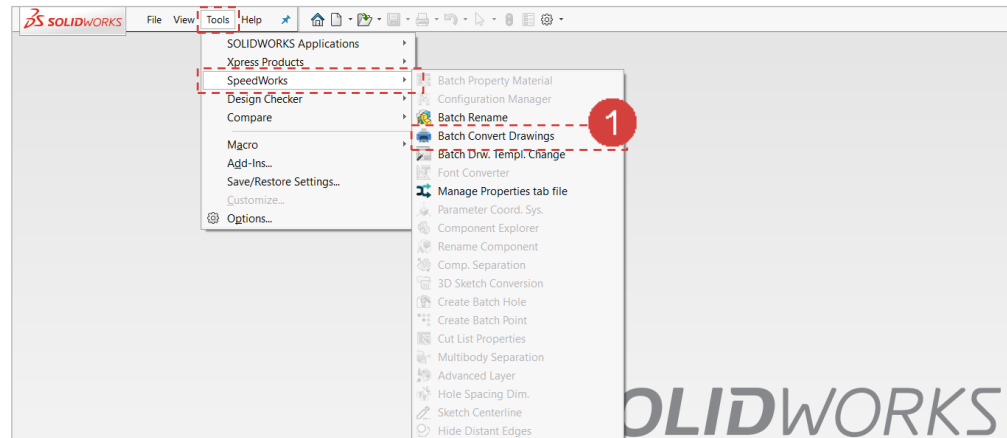


Batch Convert Drawings - Execute

Work on the part with the red circle (1) following instructions by yourself.
The part with the black square (1) is an additional explanation or a reference.

- 1 Execute tool by click **SOLIDWORKS** – [Tools] tab – [SpeedWorks] – [Batch Convert Drawings].

(or) With any Part/Assembly/Drawing file opened, click [SpeedWorks] tab – [Batch Convert Drawings].

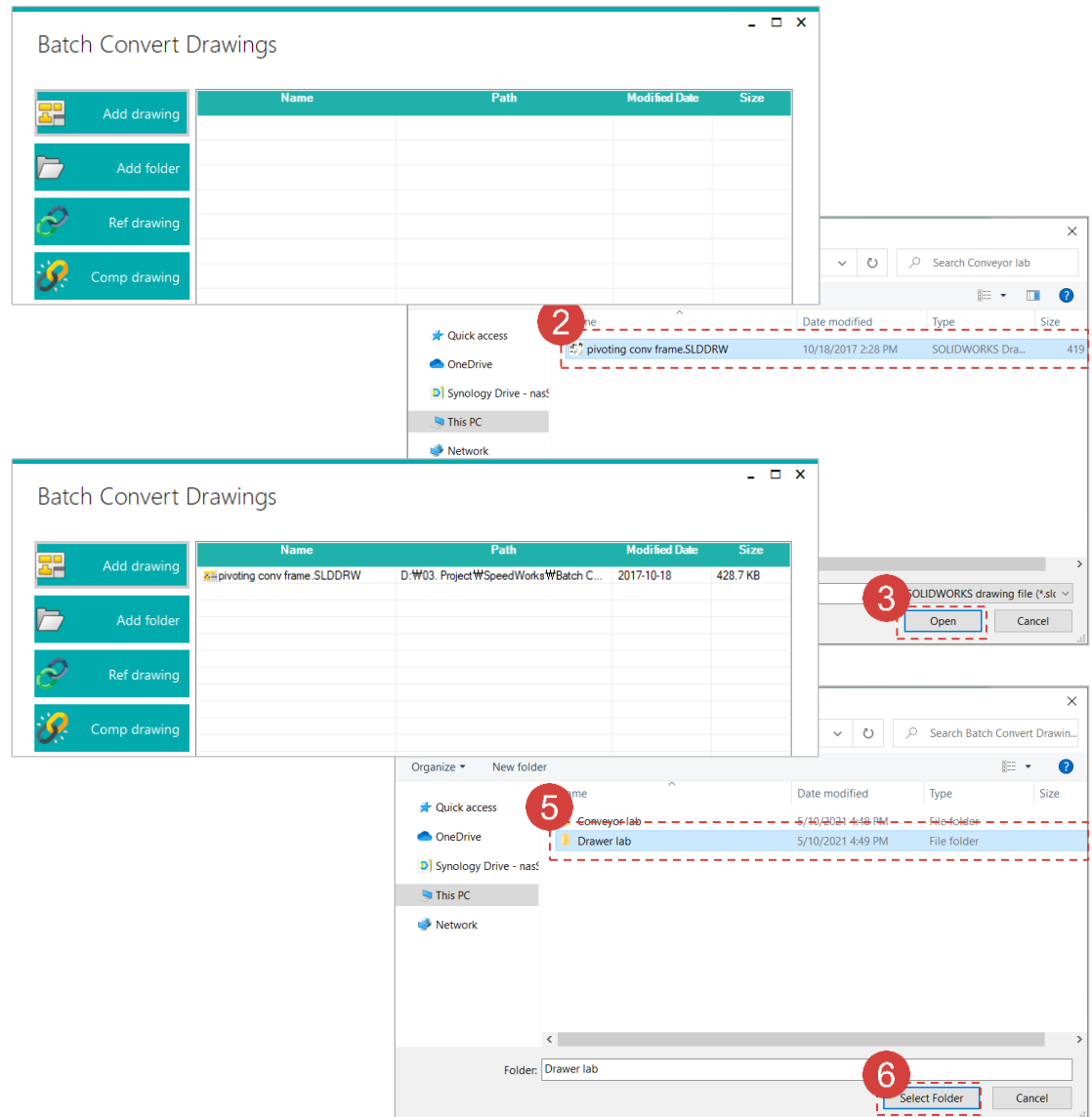


※ You can download example files at Support page in SpeedWorks Homepage(<https://speedworks.info>).

Batch Convert Drawings - Add Target

Work on the part with the red circle (1) following instructions by yourself.
The part with the black square (1) is an additional explanation or a reference.

- 1 Click **[Add drawing]** button.
- 2 Select '**Batch Convert Drawings__Training(Convert)\Conveyor lab\ pivoting conv frame.SLDDRW**'.
- 3 Click **[Open]** button to add target drawing.
- 4 Click **[Add folder]** button.
- 5 Select '**Batch Convert Drawings__Training(Convert)\Drawer lab**' folder.
- 6 Add all drawing files in the folder by clicking **[Select Folder]** button.



Batch Convert Drawings - Option Set

Work on the part with the red circle (1) following instructions by yourself.
The part with the black square (1) is an additional explanation or a reference.

1 Click **[Option]** button.

2 Check **[Insert stamp on drawing]** and **[Rebuilding drawing and save]**.

1 **[Find reference drawing]**: Specify the level of searching level for the referenced drawings.

2 **[Add prefix]**: Add characters at the front of file name.

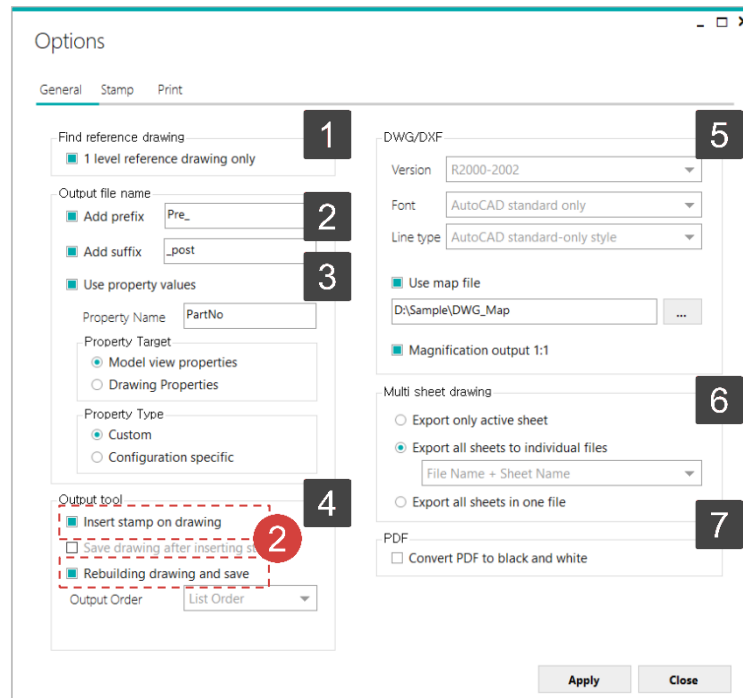
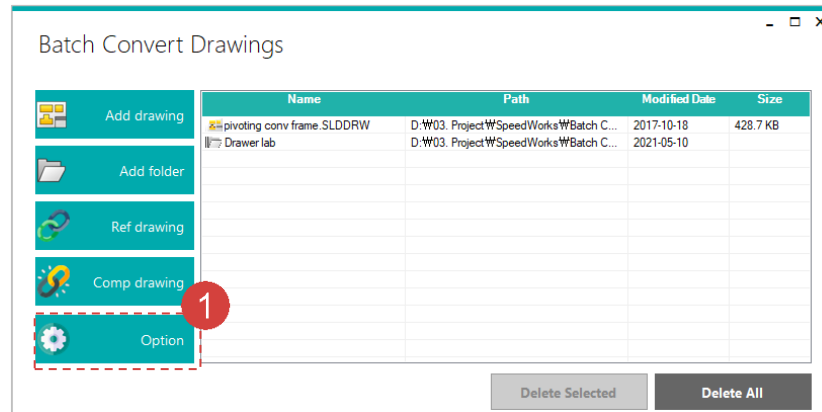
3 **[Add suffix]**: Add characters at end of file name.

4 **[Output tool]**: Specify options to apply for drawing files when users convert or print drawings.

5 **[DWG/DXF]**: Set CAD version, font, scale and map file when users convert to DWG/DXF format.

6 **[Multi sheet drawing]**: Select output type when target file has multi sheets.

7 **[PDF]**: This option allows user to print in black and white for pdf file.



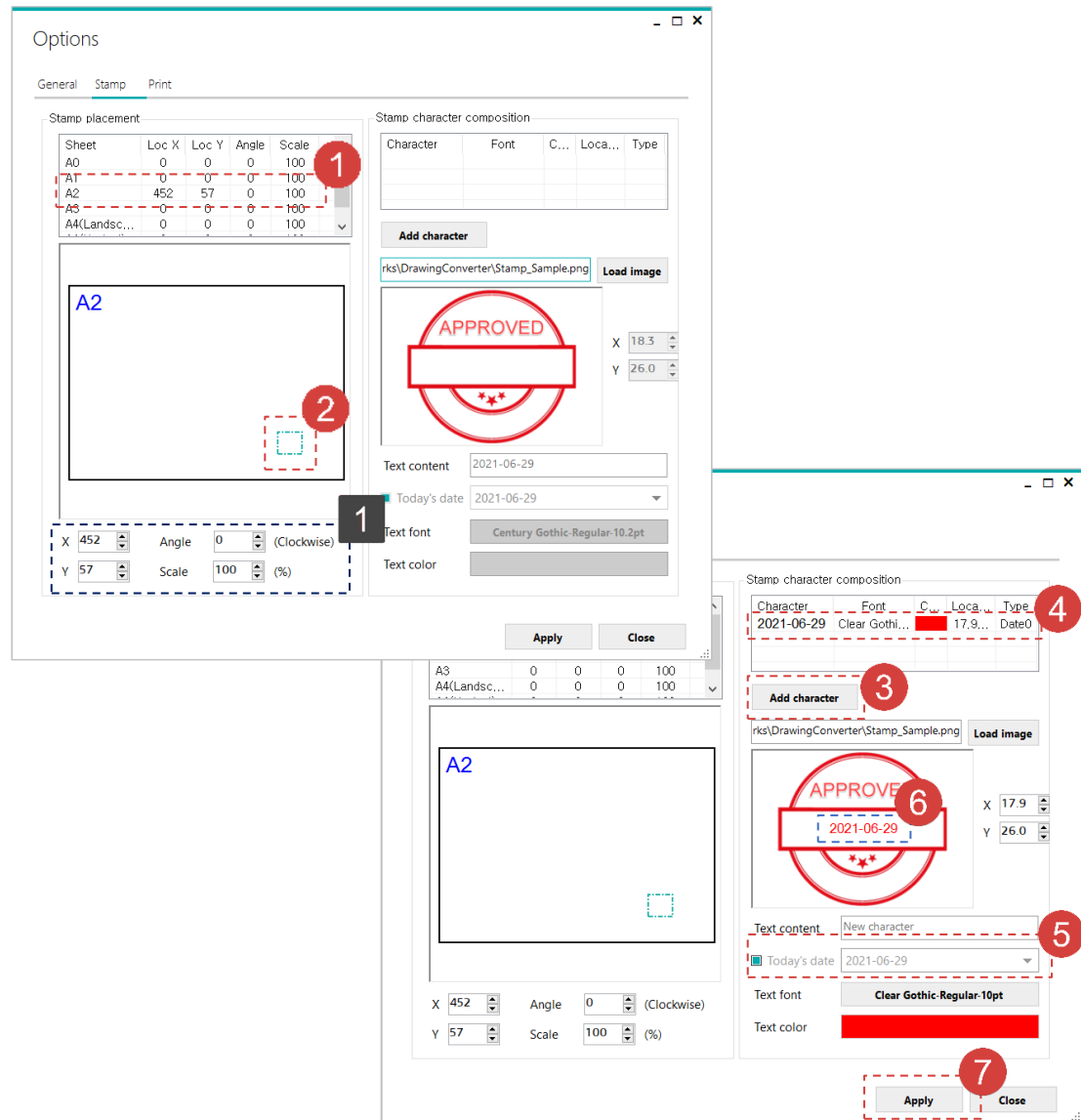
Batch Convert Drawings - Set Stamp

Work on the part with the red circle (1) following instructions by yourself.
The part with the black square (1) is an additional explanation or a reference.

- 1 Select **[A2]** size.
- 2 Specify the stamp location by clicking on drawing.
If users click the location, the dashed-line rectangle is placed to the location.
- 3 Add characters in the stamp by clicking **[Add character]**.
- 4 To edit the text, select the characters which have been added now.
- 5 Check the **[Today's date]**.
- 6 Click the center of the stamp to place the text.
- 7 Click **[Apply]** button.

2 6 It is possible to change the new location by clicking.

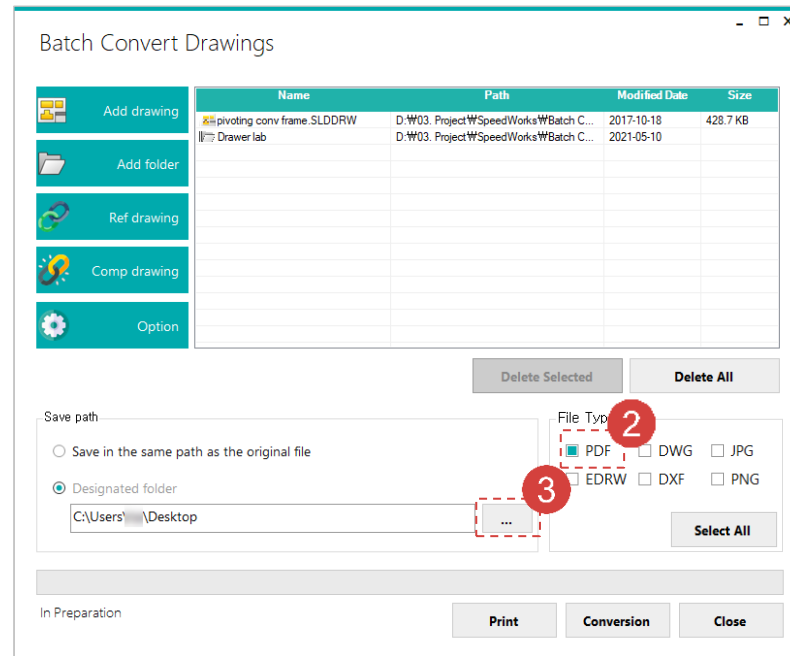
1 User can also edit the stamp location using by coordinate coordinates system. X indicates the horizontal direction of drawing, and Y indicates the vertical direction of drawings.



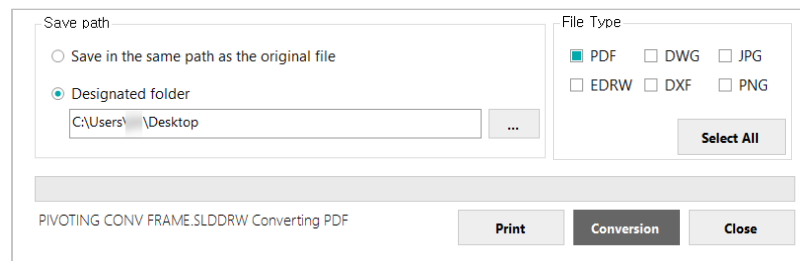
Batch Convert Drawings - Conversion

Work on the part with the red circle (1) following instructions by yourself.
The part with the black square (1) is an additional explanation or a reference.

- 1 Check the **[Designated folder]**.
- 2 Check the **[PDF]** to convert drawing file to PDF.
- 3 Click **[...]** button to designate save directory. In this tutorial, specify Desktop to easily find.
- 4 Click **[Conversion]** button to convert.



- 1 Users can monitor progress status with the progress bar placed on the bottom of **[Batch Convert Drawings]** window.



Batch Convert Drawings - Output

Work on the part with the red circle (1) following instructions by yourself.
The part with the black square (1) is an additional explanation or a reference.

1 The location specified in [Set Stamp] section has been displayed now. If users convert it, users can see the result like in 1.

2 The default location of a stamp in is depicted in 2.

1 The customized stamp has been added in A2 size of a paper.

2 The customized stamp has been added in A1 size of a paper. In this case, the location of the stamp is not changed from its default.

